

INSTRUCTION SHEET

16200114

Description: Oven Cavity Replacement Kit #14129066

Oven Cavity Kit for the following ovens listed below:
HDC12A2

- Contents: 4 – 59001999 – Magnetron Studs
1 – 12019302 – Door Adjustment Shim, large
1 – 12382602 – Door Adjustment Shim, small
1 – 10966610 – Neoprene Gasket
1 – 16200112 – Label
1 – 59124187Q – Oven Cavity Assembly
1 – 16200114 – Instruction Sheet



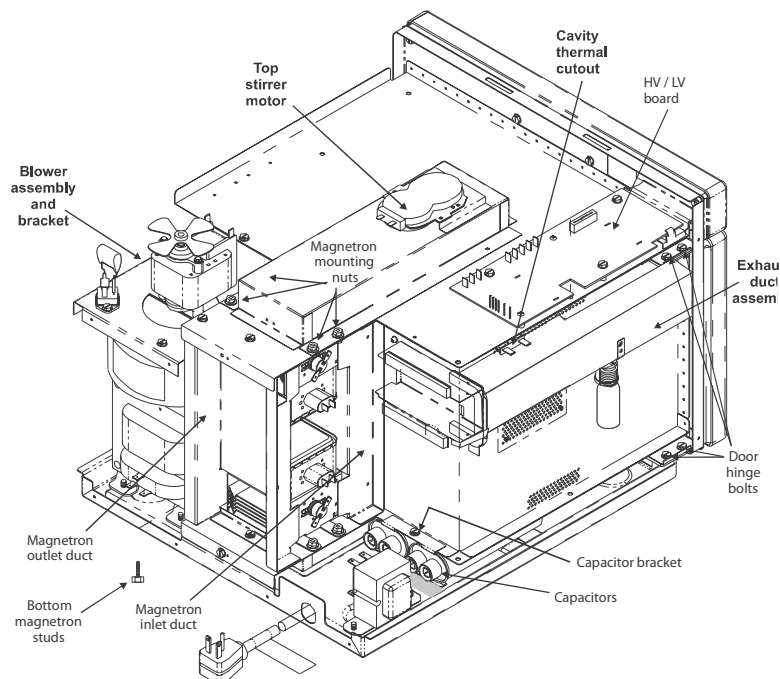
WARNING

To avoid risk of electrical shock, personal injury or death, disconnect electrical power before servicing.



CAUTION

To avoid risk of personal injury or property damage, due to sharp edges, handle stainless steel parts with care.

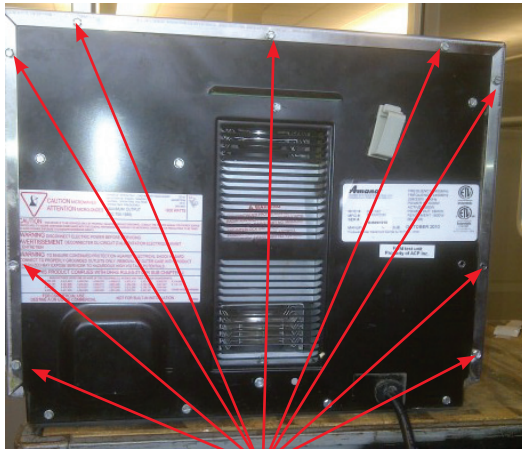


ACP, Inc.
225 – 49TH Avenue Drive SW
Cedar Rapids, IA 52404

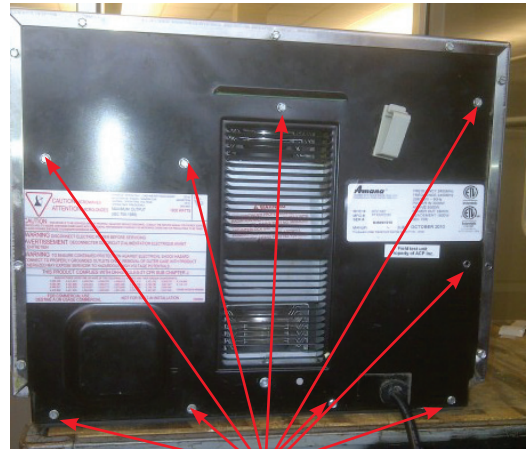
REV. 0
DATE: 6-29-12
PART #: 16200114
Page 1 OF 6

Procedure for Cavity Removal:

1. Disconnect power to the unit.
2. Remove the 9 – ¼" (7 mm) hex head screws securing the outer case to the back panel, lift the outer case slightly at the rear and slide it back. Set the outer case aside for reinstallation (Figure 1).
3. Remove the 9 – ¼" (7 mm) hex head screws securing the back panel to the base and cavity, set the back panel aside for reinstallation (Figure 2).



Remove 9 – ¼" (7 mm) Hex Head Screws
Figure 1

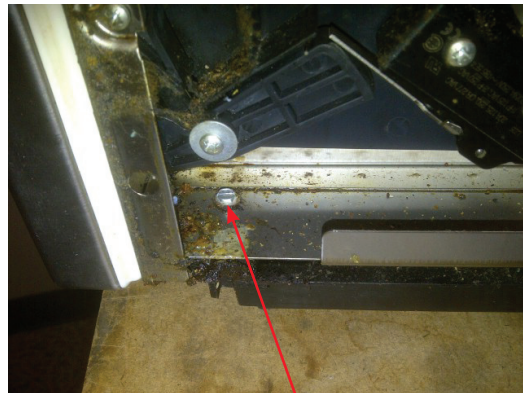


Remove 9 – ¼" (7 mm) Hex Head Screws
Figure 2

4. Remove the 2 Phillips head screws, securing the door interlock assembly to the cavity and move to the rear of the oven. There is no need to disconnect the wires (Figure 3).
5. Remove the ¼" (7 mm) hex head screw directly under the interlock switch assembly holding the cavity to the base (Figure 4).

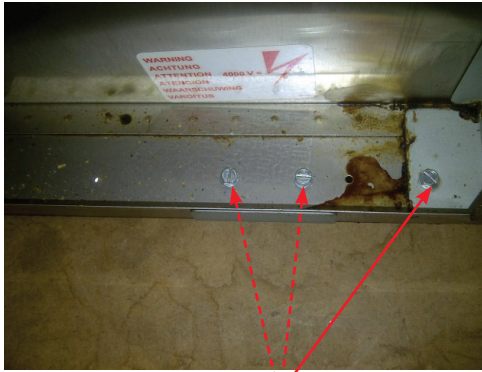


Remove 2 – Phillips Screws
Figure 3

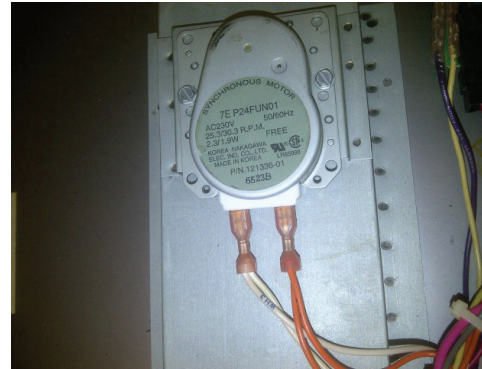


Remove Phillips Screw
Figure 4

6. Remove the 1/4" (7 mm) hex head screw holding the diode mounting plate to the cavity (Figure 5).
Now would be a good time to test the diodes and to ensure that the screws are tight on mounting plate.
7. Remove the 2 – 1/4" (7 mm) hex head screws holding the capacitor mounting plate assembly to the cavity and set aside for reinstallation.
8. Disconnect the orange and white wires from the upper stirrer motor (Figure 6).

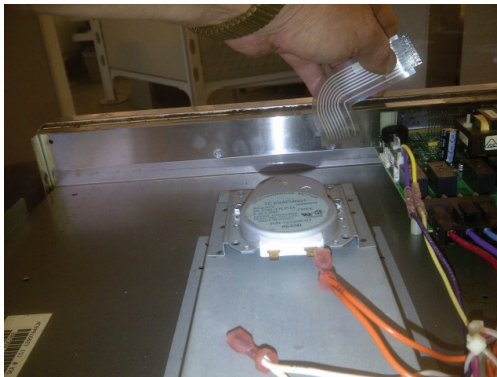


Remove 1/4" (7 mm) Hex Head Screw
Old Style May Have 2 – 1/4" (7 mm)
Hex Head Screws (Figure 5)

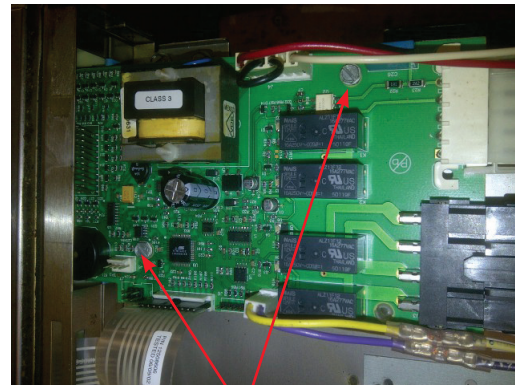


Disconnect Orange and White Wires
(Figure 6)

9. Disconnect the touch pad ribbon cable from the HV/LV board and remove the 4 – 1/4" (7 mm) hex head screws, carefully pull the ribbon cable through the slot, remove the touch pad and set aside for reinstallation (Figure 7).
10. Remove the 2 – 1/4" (7 mm) hex head screws holding the HV/LV board to the cavity and move to the rear of the unit. There is no need to disconnect the wires (Figure 8).

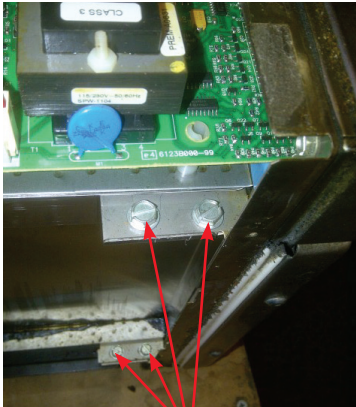


Remove 4-1/4" (7 mm) Hex Head
Screws and Remove Touch pad
(Figure 7)

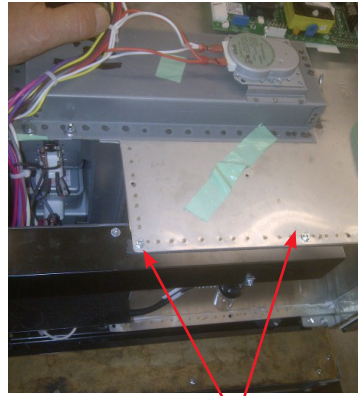


Remove 2-1/4" (7 mm) Hex Head
Screws (Figure 8)

11. Remove the 4 – 5/16" (8 mm) screws securing the door hinges to the cavity and set the door aside for reinstallation (Figure 9).
12. Carefully cut the silicone from the front edge of the exhaust duct and the foam tape from the rear of the exhaust duct, and then remove the 2 – 1/4" (7 mm) hex head screws from the top of the exhaust duct and release the duct from the cavity (Figure 10).

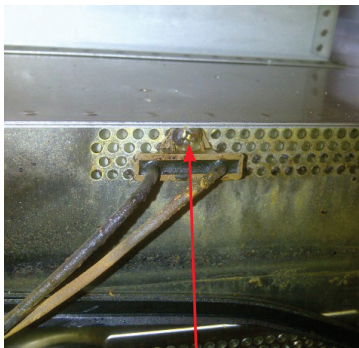


Remove 4-5/16" (8 mm) Hex Head Screws (Figure 9)



Remove 2-1/4" (7 mm) Hex Head Screws (Figure 10)

13. Remove the Phillips head screw holding the thermal cutout to the cavity and pull the exhaust duct assembly to the rear of the unit (Figure 11).
14. Remove the 1/4" (7 mm) hex head screw and remove the bracket holding the capacitors to the cavity (Figure 12).
15. From underneath the base, remove the 2 – 5/16" (8 mm) hex head screws holding the auto-transformer and move it out of the way. Then pull out the 2 capacitors, disconnect the wires and set the capacitors aside for reinstallation. Reinstall the auto-transformer and tighten the 2 screws.

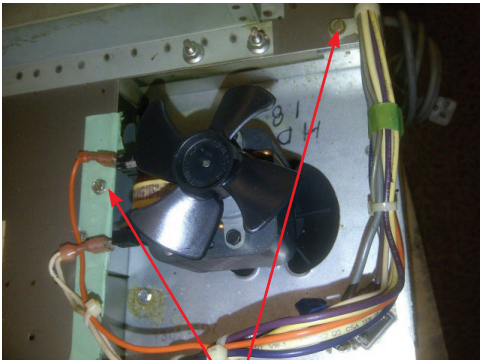


Remove Phillip screw to release cavity thermal cutout from cavity (Figure 11)

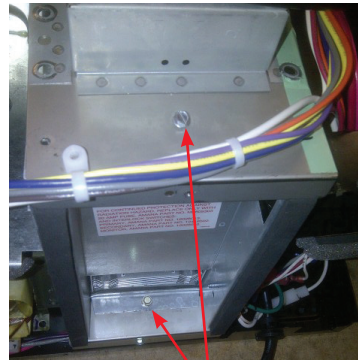


Remove 1/4" (7 mm) Hex Head Screw (Figure 12)

16. Remove the 2 – ¼” (7 mm) hex head screws, securing the blower assembly and bracket to the cavity and pull it to the rear of the unit. You do not have to remove any of the wires (Figure 13).
17. Remove the ¼” (7 mm) and 5/16” (8 mm) hex head screws securing the magnetron outlet duct and pulling it loose from the bottom, remove the duct and set aside for reinstallation (Figure 14).

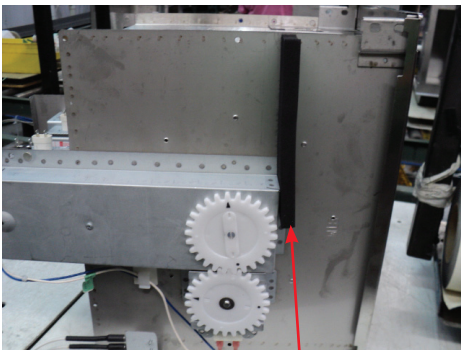


Remove 2-¼” (7 mm) Hex Head Screws (Figure 13)



Remove 1-¼” (7 mm) and 1-5/16” (8 mm) Hex Head Screw to Remove Outlet Duct (Figure 14)

18. Remove the ¼” (7 mm) hex head screw from the flange that holds the cavity to the base.
19. Disconnect the red and black wires from the magnetron thermal cutoff on both the upper and lower magnetrons.
20. Lift the rear of the cavity slightly and pull towards the front. Once the cavity is released from the base, tilt it slightly to the side, remove the blue and white wires from the lower stirrer motor and release the wires from the harness clips. The old cavity is now free to be removed.
21. Turn cavity over. If old cavity has a gasket as shown below (Figure 15), install the gasket supplied with the kit (part # 10966610) to the bottom of the new cavity.



Attach Gasket to Cavity if Old Cavity had Gasket (Figure 15)

22. Remove the 8 – 5/16” (8 mm) nuts holding the top and bottom magnetrons to the cavity and set aside for reinstallation.
Now is a good time to physically inspect the condition of the magnetrons before reinstallation.
23. Remove the magnetron inlet duct and reinstall in the same place on the new cavity.
24. Locate the 4- magnetron mounting studs (part number 59001999) and install in the 4 lower magnetron mounting studs, with the threads facing up, using the mounting nuts to draw in place. Then install the lower magnetron.

25. Install the upper magnetron in place.
26. Place the new cavity on the base, tilt to the side and reattach the blue and white wires to the lower stirrer motor, install wires in the harness clips and then set the cavity on the base.
27. Lifting slightly from the rear, slide the front edge of the cavity in the front trim slot and push the cavity to the rear, until the rear mounting flange slides over the flange of the base, taking care not to pinch any wires, then secure the cavity to the base with a ¼" (7 mm) hex head screw.
28. Reverse above procedure to reassemble.
29. If installing this cavity on units with manufacturing numbers of P20015xxM or earlier, attach the label included with this kit (part # 16200112) next to the serial plate on the back of the oven.

Installation of Door:

1. After the oven has been reassembled, inspect the door hinges and bushings for excessive play and replace if needed.
2. Position the door on the face of the oven cavity, sliding the hinges into the cavity and then loosely install the 4 – 5/16" (8 mm) hex head screws.
3. Attach the large door shim using tape on the hinge side, between the upper and lower hinge and attach the small door shim, using tape between the door latch and close door.
4. Apply light pressure on the hinge side of the door and tighten the 4 – 5/16" (8 mm) hex head screws.
5. Remove the large door shim from the hinge side only, close the door and observe the switch activation. The door is properly adjusted when the primary and secondary switch plungers are fully depressed when the door is closed.
6. If the switch needs adjustment, loosen the 2 Phillips head screws slightly and position the interlock switch assembly all the way towards the front of the oven. Recheck door switch activation.
7. Remove small door shim from latch side of door and perform microwave leakage test

