

Commercial Microwave—Technical Information

230V, 50 Hz Models

RMS510T P2001211M
RMS510D P2001210M

RMS510TS P2001212M

Due to possibility of personal injury or property damage, always contact an authorized technician for servicing or repair of this unit.

- Refer to Service Manual for installation, operating, testing, troubleshooting, and disassembly instruction.

CAUTION

All safety information must be followed as provided in Service Manual.

WARNING

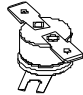
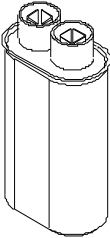
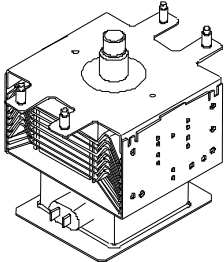
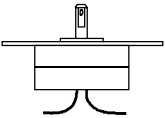
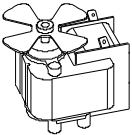

To avoid the risk of electrical shock, personal injury or death, disconnect power to oven and discharge capacitor before servicing, unless testing requires power.

Models	RMS510D / RMS510T*
Power Source	
Voltage AC	230 VAC
Amperage (Single Unit)	15 A
Frequency	50 Hz
Single Phase, 3 wire grounded	X
Receptacle	CEE 7/7 Schuko
Plug	CEE 7/7 Schuko
Power Output	
Nominal microwave energy (IEC705)	1000 Watts
Minimum temperature rise (ΔT)	10° F / 5° C
Operating Frequency	2450 MHz
Power Consumption	
Cook Condition Microwave	1150 Watts
Dimensions	
Cabinet	
Width	508 (20")
Height	311 (12 1/4")
Depth	419 (16 1/2")
Oven Interior	
Width	330.2 (13")
Height	197 (7 3/4")
Depth	330.2 (13")
Weight	
Crated	14.5 kg. (39 lbs.)
Uncrated	17.7 kg. (32 lbs.)

Component Testing Procedures

⚠ WARNING

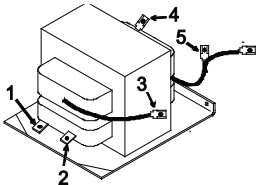
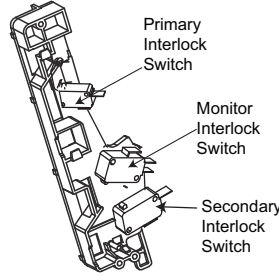
To avoid risk of electrical shock, personal injury or death, disconnect power to oven and discharge capacitor before servicing, unless testing requires power.

Illustration	Component	Test	Results
	Thermal Cutout	Disconnect all wires from TCO. Measure resistance across terminals. Cavity Thermal Fuse..... Magnetron TCO.....	Open at 230° F (110° C). Open at 320° F (160° C).
	Diode Assembly	Discharge Capacitor Remove diode lead from capacitor and connect ohmmeter. Reverse leads for second test.	Infinite resistance should be measured in one direction and 50KΩ or more in the opposite direction. NOTE: Test meter must contain a battery of 6 volts minimum.
	Capacitor	Discharge Capacitor Remove wires from capacitor terminals and connect ohmmeter, set on highest resistance scale to terminals. Also check between each terminal and capacitor case.	Between Terminals: Meter should momentarily deflect towards zero then return to over 5 MΩ. If no deflection occurs, or if continuous deflection occurs, replace capacitor. Terminal to Case: Infinite resistance.
	Magnetron	Discharge Capacitors Remove wires from magnetron and connect ohmmeter to terminals. Also check between each terminal and ground.	Between Terminals: Less than 1 Ω. Each terminal to ground measures Infinite resistance. NOTE: This test is not conclusive. If oven does not heat and all other components test good replace the magnetron and retest.
	Stirrer Motor	Remove all wires from terminals. Measure resistance from: terminal to terminal.....	Approximately 10 KΩ.
	Blower Motor	Remove all wires from motor. Measure resistance from terminal to terminal.....	Approximately 435 Ω.
	Fuse block / Filter assembly	Power In terminals Power Out terminals	230 VAC 230 VAC If no power in, check power outlet If no power out, check fuses

Component Testing Procedures

⚠ WARNING

To avoid risk of electrical shock, personal injury or death, disconnect power to oven and discharge capacitor before servicing, unless testing requires power.

Illustration	Component	Test	Results
 <p>Terminal 1 – 230 V Terminal 2 – Common</p>	Transformer	<p>Discharge Capacitors Remove all wires from terminals. Measure resistance from:</p> <p>Terminal 1 to Terminal 2..... Terminal 1 to Wire 3..... Wire 3 to Wire 5..... Terminal 4 to Ground screw on transformer ... Terminal 4 to any other terminal.....</p>	<p>2.0 Ω. Infinite Less than 1 Ω. 160-170 Ω. Infinite resistance. If not, replace transformer.</p>
 <p>Primary Interlock Switch Monitor Interlock Switch Secondary Interlock Switch</p>	Interlock switch assembly	<p>Disconnect wires to switch.</p> <p>With door open measure resistance from:</p> <p>Terminal C to NC Monitor..... Terminal C to NO Primary / Logic..... Terminal C to NO Secondary.....</p> <p>With door closed measure resistance from:</p> <p>Terminal C to NC Monitor..... Terminal C to NO Primary / Logic..... Terminal C to NO Secondary.....</p> <p style="text-align: center;">Door Closed</p> <p>Primary / Logic C —●—●— NO</p> <p>Monitor C —●—●— NC</p> <p>Secondary C —●—●— NO</p>	<p>Continuity. Infinite. Infinite.</p> <p>Infinite. Continuity. Continuity.</p>
Wire Harness		Test continuity of wires	Continuity.

Component Testing Procedures



WARNING

To avoid risk of electrical shock, personal injury or death, disconnect power to oven and discharge capacitor before servicing, unless testing requires power.

All Amana and Menumaster microwave oven power outputs are rated using the IEC705 standards. Using the IEC705 test method requires precision measurements and equipment that is not practical to be performed in the field. Using the test shown below will indicate if the oven performance is satisfactory.

Test equipment required:

- 1000 ml test container and thermometer.
- Digital watch / watch with a second hand for use on ovens with electromechanical timers.

Important Notes:

- Low line voltage will cause low temperature rise / power output.
- Ovens must be on a dedicated circuit, properly grounded, and polarized. Other equipment on the same circuit may cause a low temperature rise / power output.
- This test and results are not a true IEC705 test procedure and are only intended to provide servicers with an easy means of determining if the microwave oven cooking output is correct.

Procedure

1. Fill the test container to the 1000 ml line with cool tap water.

NOTE: Water temperature should be approximately 60°F / 16°C.

2. Using the thermometer, stir water for five to ten seconds; measure, and record the temperature (T1).
3. Place test container of water in the center of oven cavity and close door.
4. Heat the water for a 33-second full power cycle.

NOTE: Use a digital watch or a watch with a second hand for ovens with electromechanical timers.

5. At end of the cycle, remove test container. Using the thermometer, stir water for five to ten seconds and record temperature (T2).
6. Subtract the starting water temperature (T1), from the ending water temperature (T2) to obtain the temperature rise (ΔT).
7. If the temperature rise (ΔT) meets or exceeds the minimum, the test is complete. If the temperature rise (ΔT) fails to meet the minimum temperature rise, test the line voltage to verify it is correct. Then repeat steps 1 - 6 making sure to change the water. If the temperature rise (ΔT) fails to meet the minimum temperature rise again the oven will require service.

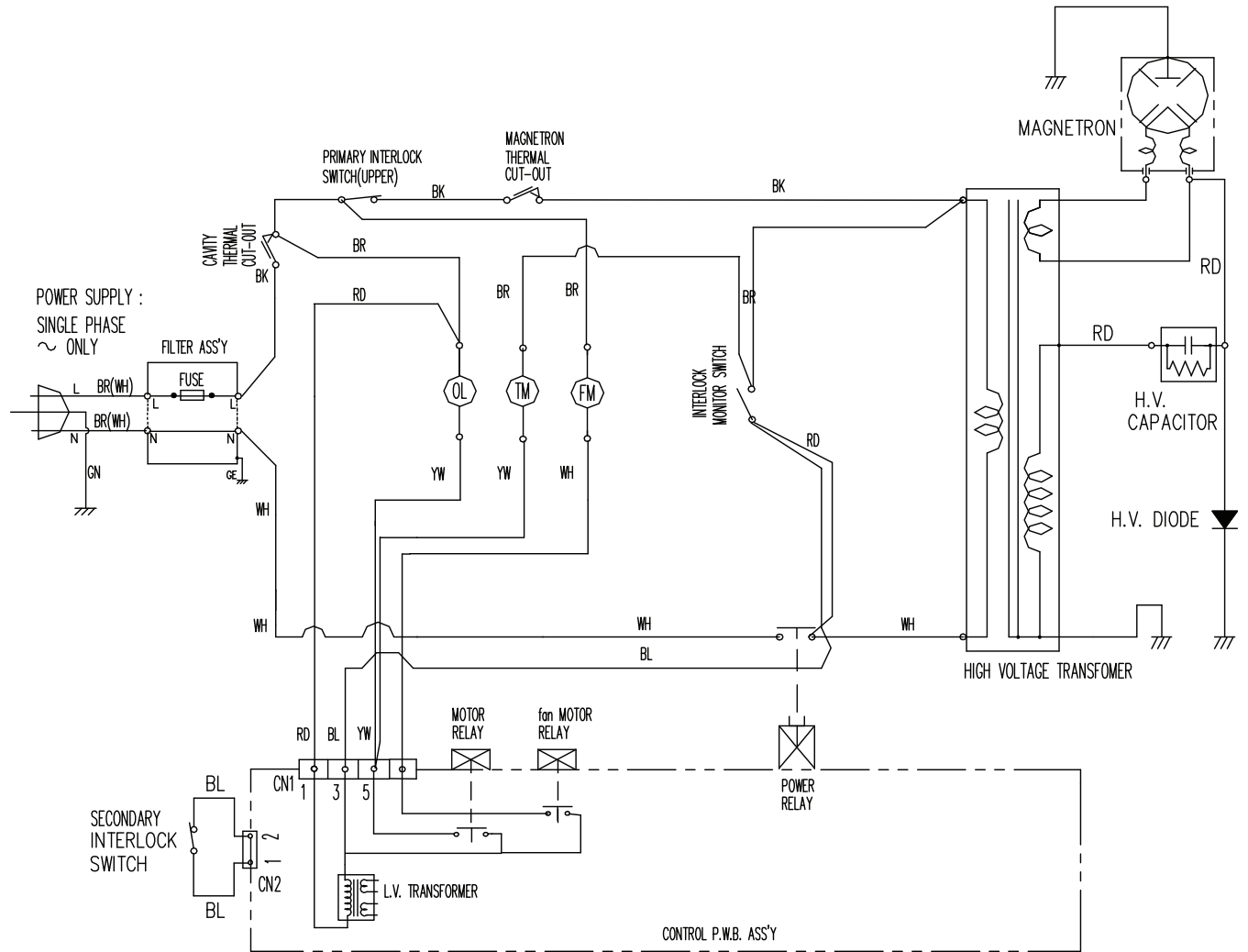
Minimum Temperature Rise at Thirty -Three (33) Seconds Run Time

ΔT (°F)	Cooking Power Output	ΔT (°F)	Cooking Power Output	ΔT (°C)	Cooking Power Output	ΔT (°C)	Cooking Power Output
10.....	1000	20.....	2000	5.....	1000	11.....	2000
11.....	1100	21.....	2100	5.5.....	1100	11.5.....	2100
12.....	1200	22.....	2200	6.5.....	1200	12.....	2200
14.....	1400	24.....	2400	7.5.....	1400	13.....	2400
17.....	1700	25.....	2500	9.5.....	1700	13.5.....	2500
18.....	1800	27.....	2700	10.....	1800	15.....	2700
19.....	1900	30.....	3000	10.5.....	1900	16.5.....	3000

Wiring and Schematic Diagrams

⚠ WARNING

To avoid risk of electrical shock, personal injury or death, disconnect power to oven and discharge capacitor before servicing, unless testing requires power.



[CONDITION]
 DOOR : CLOSED
 COOK : OFF

NOTE :
 Ⓞ : OVEN LAMP
 Ⓜ : FAN MOTOR
 Ⓜ : TRAY MOTOR

BK : BLACK
 RD : RED
 WH : WHITE
 YW : YELLOW

BL : BLUE
 BR : BROWN
 GN : GREEN
 GE : YELLOW/GREEN

⚠ DANGER