

INSTRUCTION SHEET

16200101

New HDC Door Assembly

This instruction sheet describes the assembly and disassembly of this door assembly.

Section 1: Inner Door Removal

Inner Door Installation

Section 2: Inner Door Window Replacement

Section 3: Door Weldment Removal and Installation

Section 4: Door Latch and Spring Replacement

Section 5: Door Hinge Replacement

Section: 1

Inner Door Removal

1. Using two straight blade screwdrivers pry the inner door from outer door starting at top or bottom edge of door (Figure 1).
2. Working down the door edge move screw drivers down edge releasing tabs.

Note: There are 4 tabs on both top and bottom of door. Tabs and inner door may crack or break when removing inner door (Figure 2).

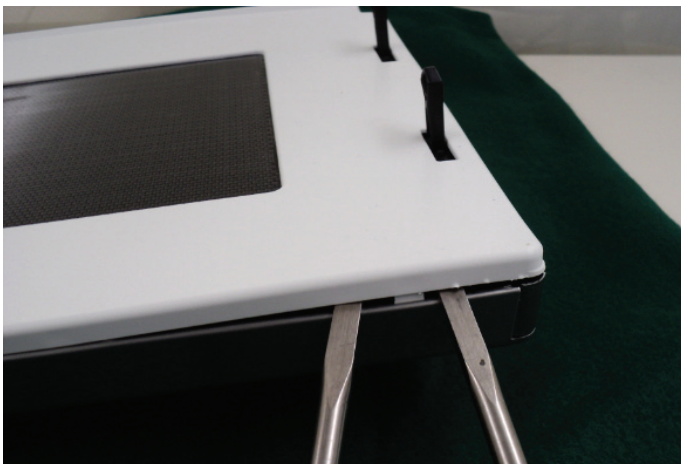


Figure 1

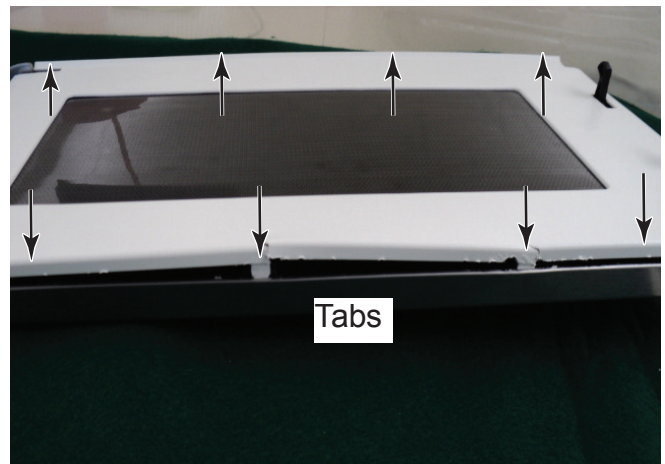


Figure 2

3. Using two straight blade screwdrivers pry and release 3 end tabs on latch end of door (Figure 3).
4. Using a putty knife pry between inner door and inner door window. Lift putty knife to release tabs from door weldment (Figure 4).

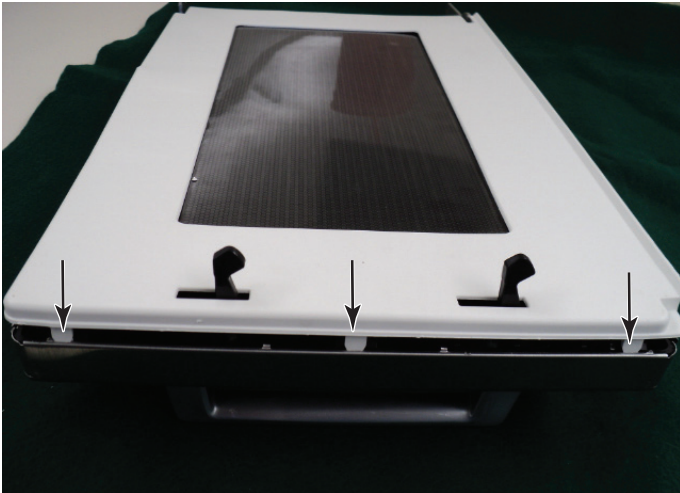


Figure 3



Figure 4

5. Lift and remove inner door and discard old inner door (Figure 5).

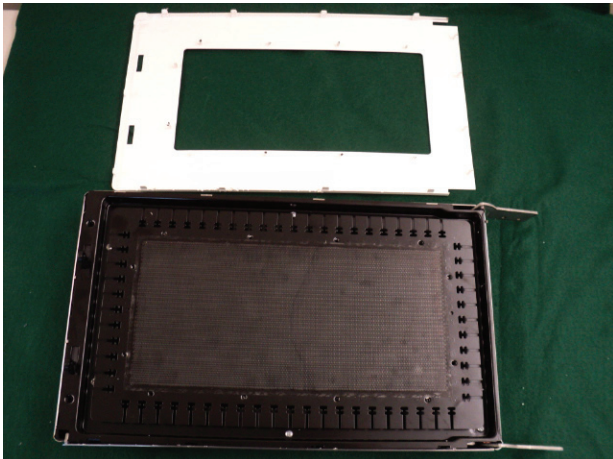


Figure 5

Inner Door Installation 59114168 Inner Door

1. Align all of the inner door tabs with holes in door weldment around the inner ring of the new inner door (Figure 6).
2. Use a rubber hammer to seat all tabs **around the outside perimeter** of the door making sure inner door is seated to the outer door assembly.

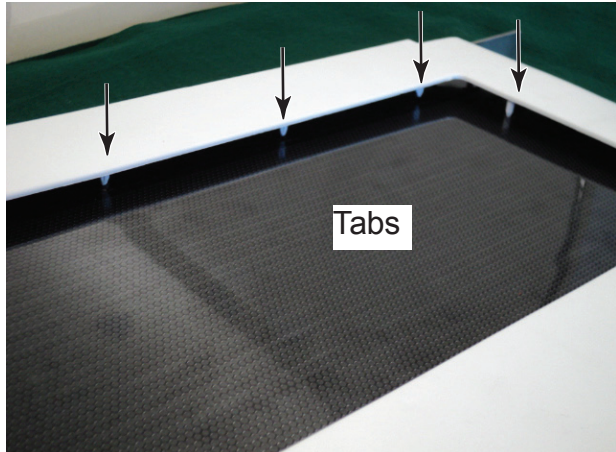


Figure 6



Figure 7

3. Press all the tabs in to the holes of the door weldment and use a rubber hammer to **seat the inner door** flush to door weldment (Figure 7).

Section: 2

Inner Door Window Replacement 20044801 Window, Inner Door

1. Remove inner door (Section 1 Inner Door Removal).
2. Remove inner door window from door weldment by peeling off.
3. Clean off all adhesive residue from door weldment.
4. Install new door window by centering the window over the perforated window surface do not cover inner door tab holes in weldment (Figure 8).
5. Use Inner Door Installation procedure in this instruction sheet to install inner door.

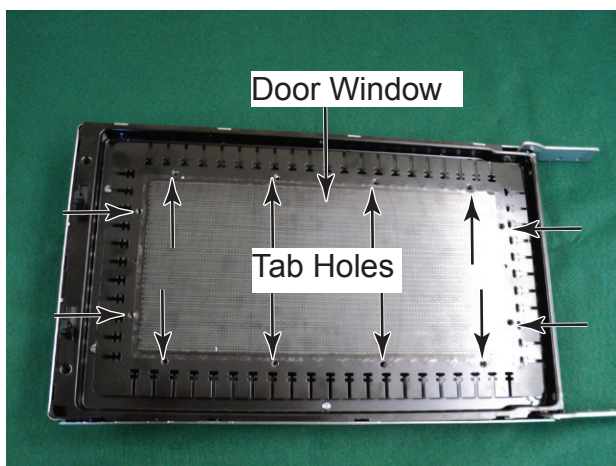


Figure 8

Section: 3

Door Weldment Removal and Installation 59114169 Weld, Inner Door - Solid 59114170 Weld, Inner Door - Window

1. Remove inner door (Section 1 Inner Door Removal).
2. Remove 6 phillips head screws around perimeter of door weldment (Figure 9).
3. Remove door weldment by placing a 2 flat blade screwdrivers next pin tabs between plastic outer door frame and door weldment and pushing in toward weldment and lifting up on corner of door weldment until all 3 pin tabs are released and lift door weldment up and out of outer door assembly (Figure 10).
4. Reinstall door weldment with hinges and washers as shown in Figure 11 then place weldment into door outer door assembly
5. Use **Inner Door Installation** procedure in this instruction sheet to install inner door.

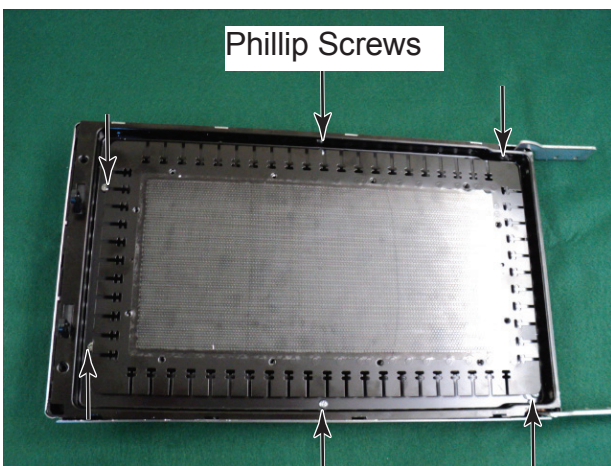


Figure 9

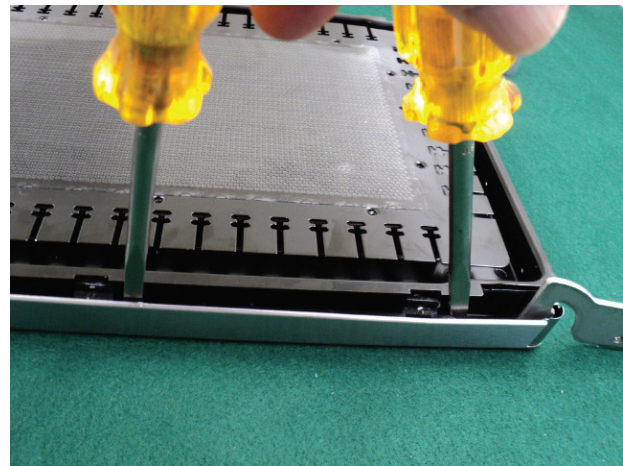


Figure 10

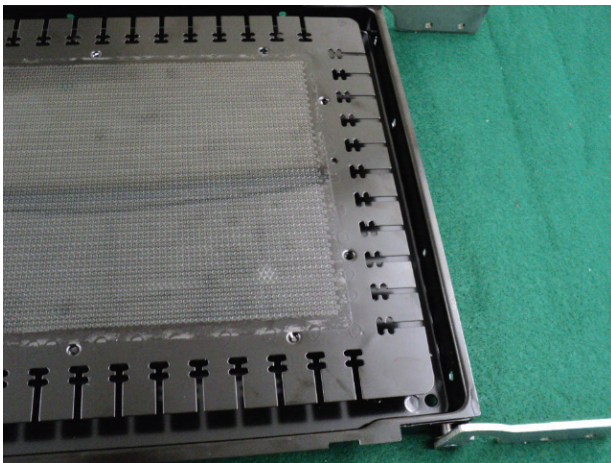


Figure 11

Section: 4

Door Latch and Spring Replacement 59114175 Latch 20045102 Spring

1. Remove inner door (Section 1 Inner Door Removal).
2. Remove door weldment (Section 3 Door Weldment Removal and Installation).
3. Remove door latch by lifting door latch out of door weldment making sure to retain spring (Figure 12).
4. Slide new door latch and spring into slot after hooking spring to retainer (Figure 13).
5. Use Door Weldment and Inner Door Installation procedure in this instruction sheet to install weldment and inner door.

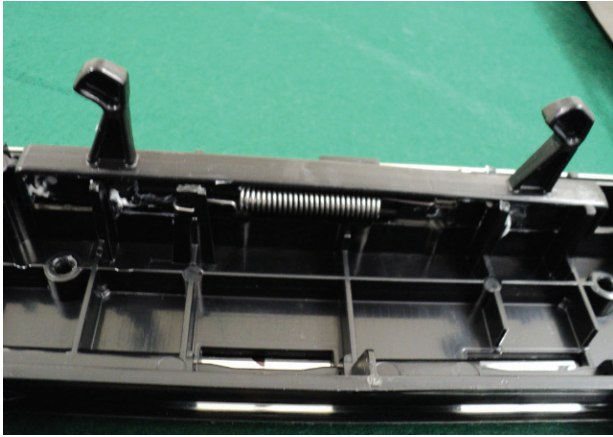


Figure 12

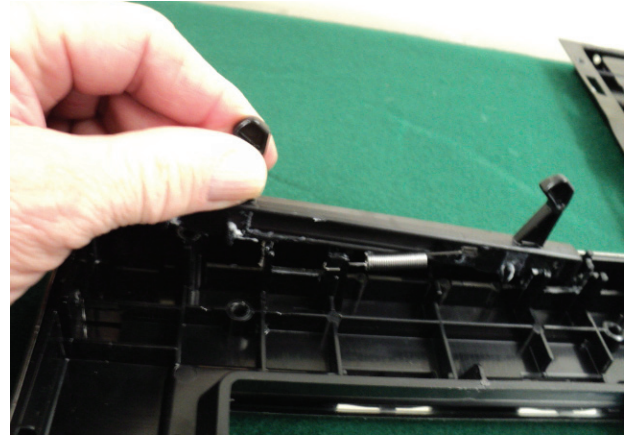


Figure 13

Section: 5

Door Hinge Replacement 14119058 Kit, Hinge-Top 14119059 Kit, Hinge-Bottom

1. Remove inner door (Section 1 Inner Door Removal).
2. Remove door weldment (Section 3 Door Weldment Removal and Installation).
3. Slide hinges out of door weldment as shown in Figure 14 and replace hinges making sure to install new brass washer with hinge (Figure 15).
4. Use Door Weldment and Inner Door Installation procedure in this instruction sheet to install weldment and inner door.



Figure 14



Figure 15