

INSTRUCTION SHEET

16200137

Description: JB Touch Panel RTV Kit # 14139083

Contents:

- 1 – Touch Panel Assembly
- 1 – Gray RTV
- 1 – 16200137 Instruction Sheet



WARNING

To avoid risk of electrical shock, personal injury or death; disconnect electrical power before servicing.

1. Remove touch panel escutcheon and remove touch panel assembly.
2. Transfer display board from old touch panel assembly to new touch panel assembly.
3. Clean all grease from inside of touch panel escutcheon corners (Figure 1).

Note: When opening RTV tube cut end of applicator to only allow a **fine** bead of RTV be applied.

4. Apply gray RTV to inside corners of escutcheon to fill corner openings and seam (Figure 1).
5. Gray RTV should come out the open corners of escutcheon. Wipe off excess (Figure 2).

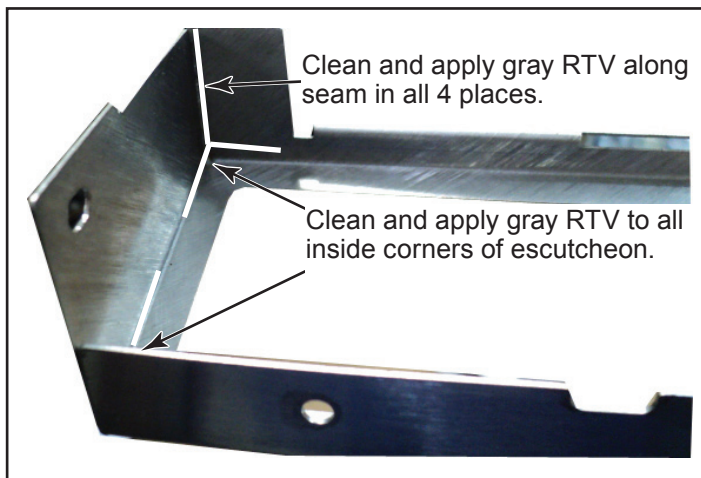


Figure 1



Figure 2

6. Install touch panel assembly with display board into touch panel escutcheon.
7. Connect ribbon connector to display board and reinstall touch panel assembly to unit.
8. Apply a **fine** bead of gray RTV along the top edge of the touch panel where it meets oven body (Figure 3, Figure 4).
9. Clean off excessive RTV to achieve a clean neat appearance.



Figure 3

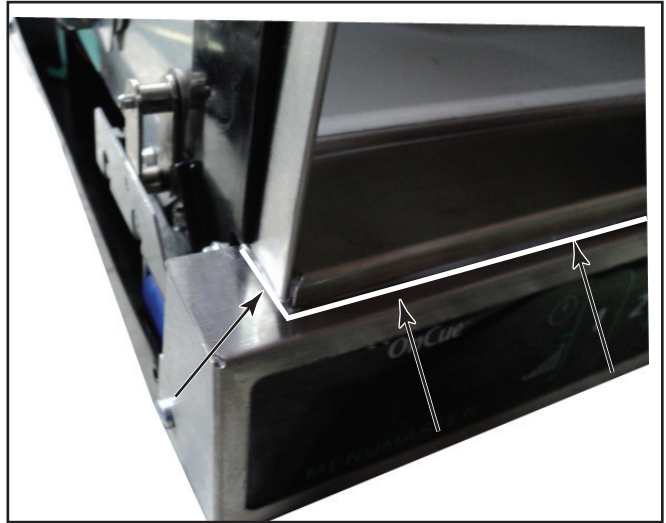


Figure 4